

Flicorno 1.B  
1.Flügelhorn in B

# PROCHÁZKA PO HORÁCH, sousedský valčík Bergauf - Bergab, Ländler

Josef Thums

♩ = 160

*f* *p* *f* *mf* *mf* *p* *mf*

2 3 15

Solo



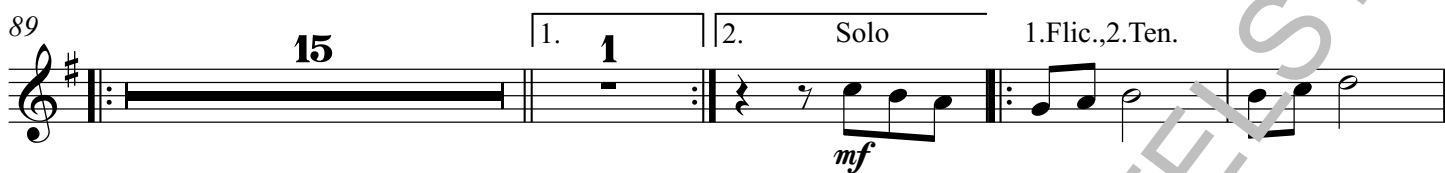
# Flicorno 1.B, 1.Flügelhorn in B /2

2

81



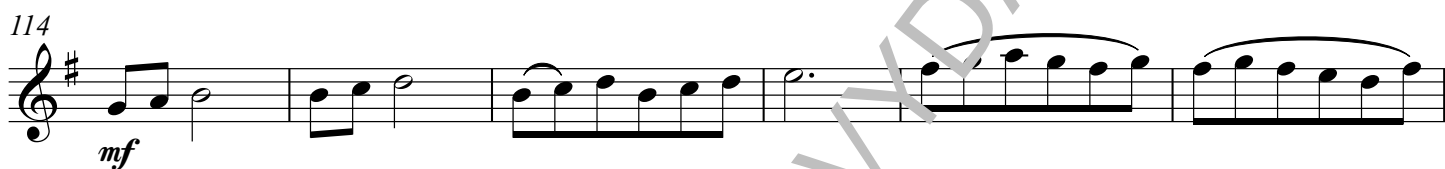
89



108



114



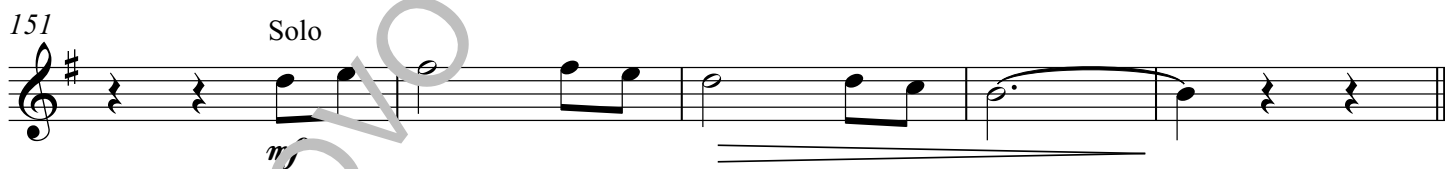
120



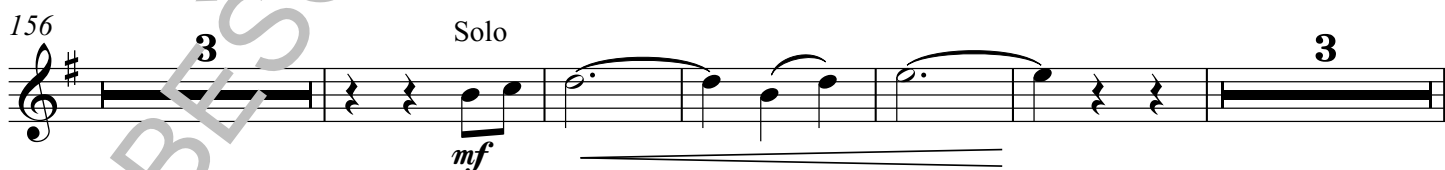
140



151



156



161

